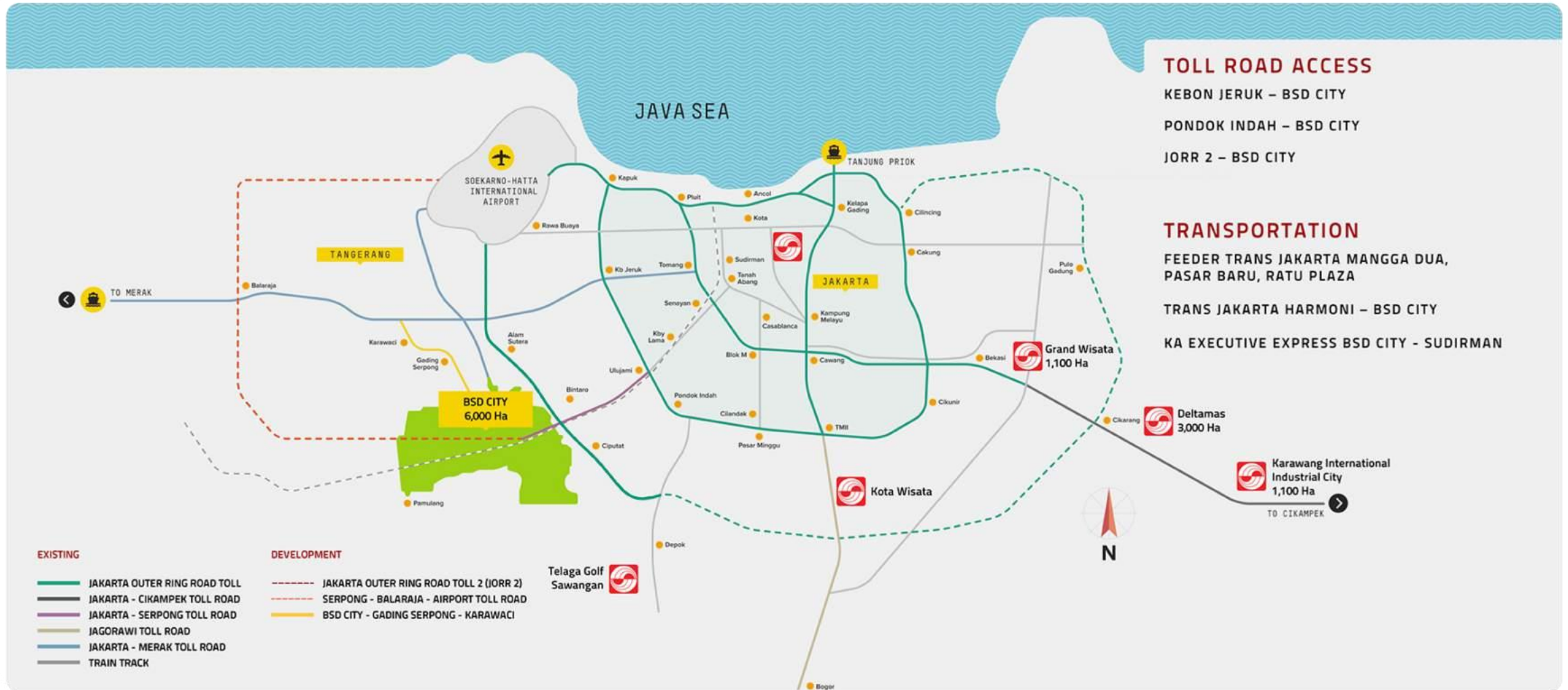


PRODUCT INFORMATION & PRICE PER TYPE

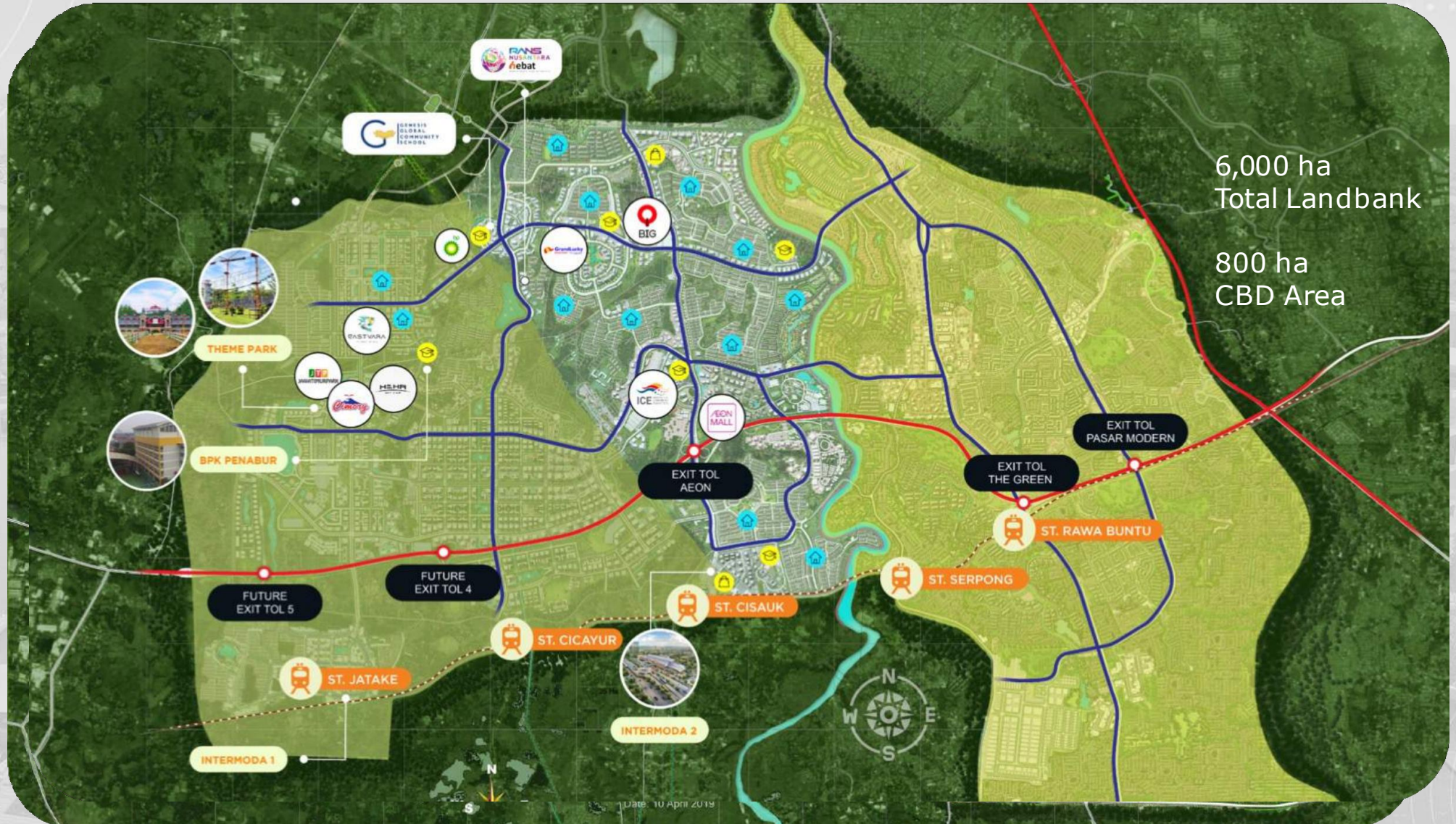
Update: 12 Jan 2026



Project Overview



Project Overview



6,000 ha
Total Landbank
800 ha
CBD Area

Date: 10 April 2019



BSD Central Business District
Ongoing Development

304 ha
Total Area

Types of Establishment

- Convention & Exhibition
- Education
- Office
- Retail
- Apartment/Condotel

NEW Business Suites

NAVAPARK
HIGHER LIVING

BSD West Business District
Future Development

372 ha
Total Area

Types of Establishment

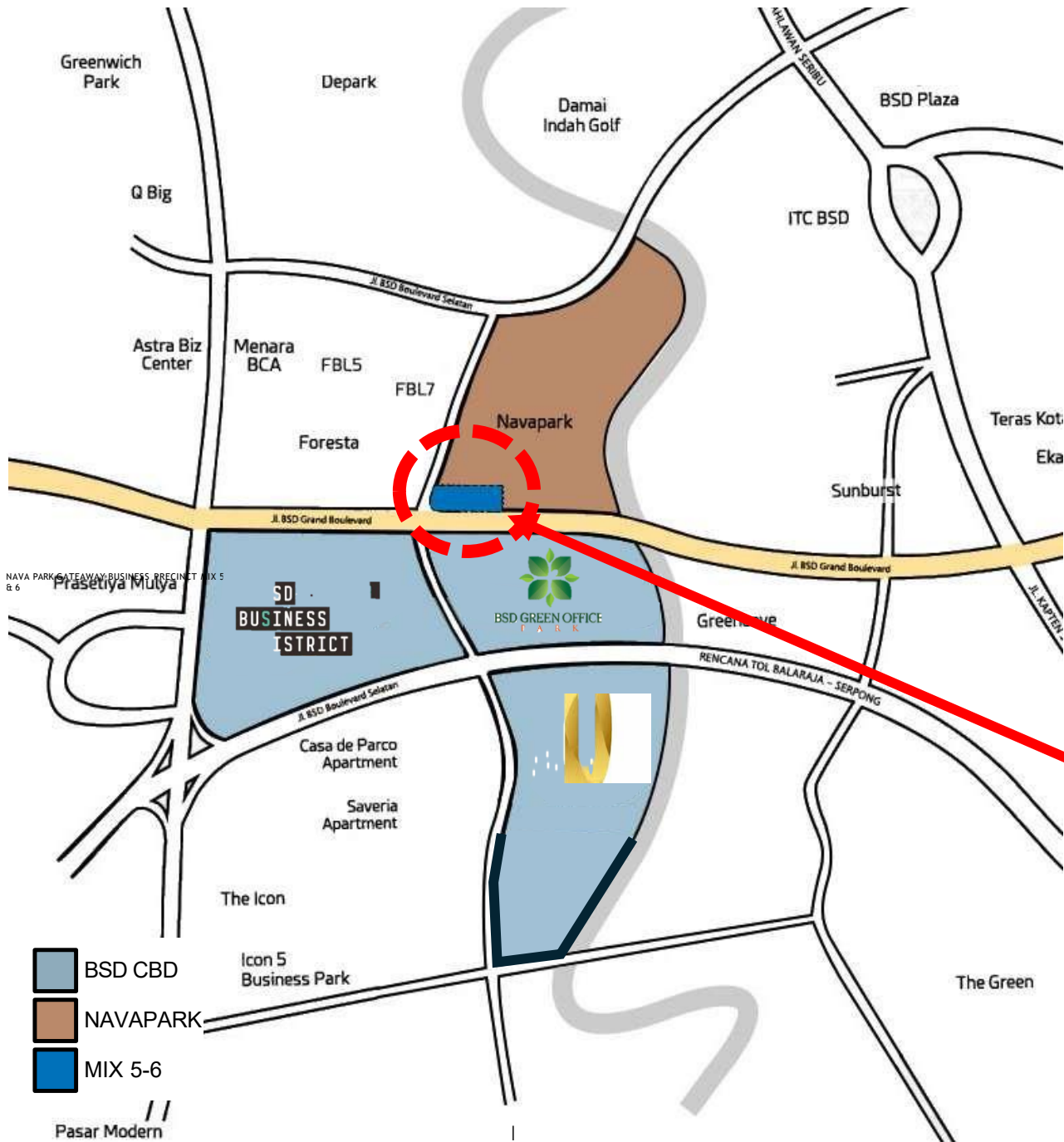
- Education
- Office
- Retail
- Apartment/Condotel
- Hotel & Leisure

BSD East Business District
Developed

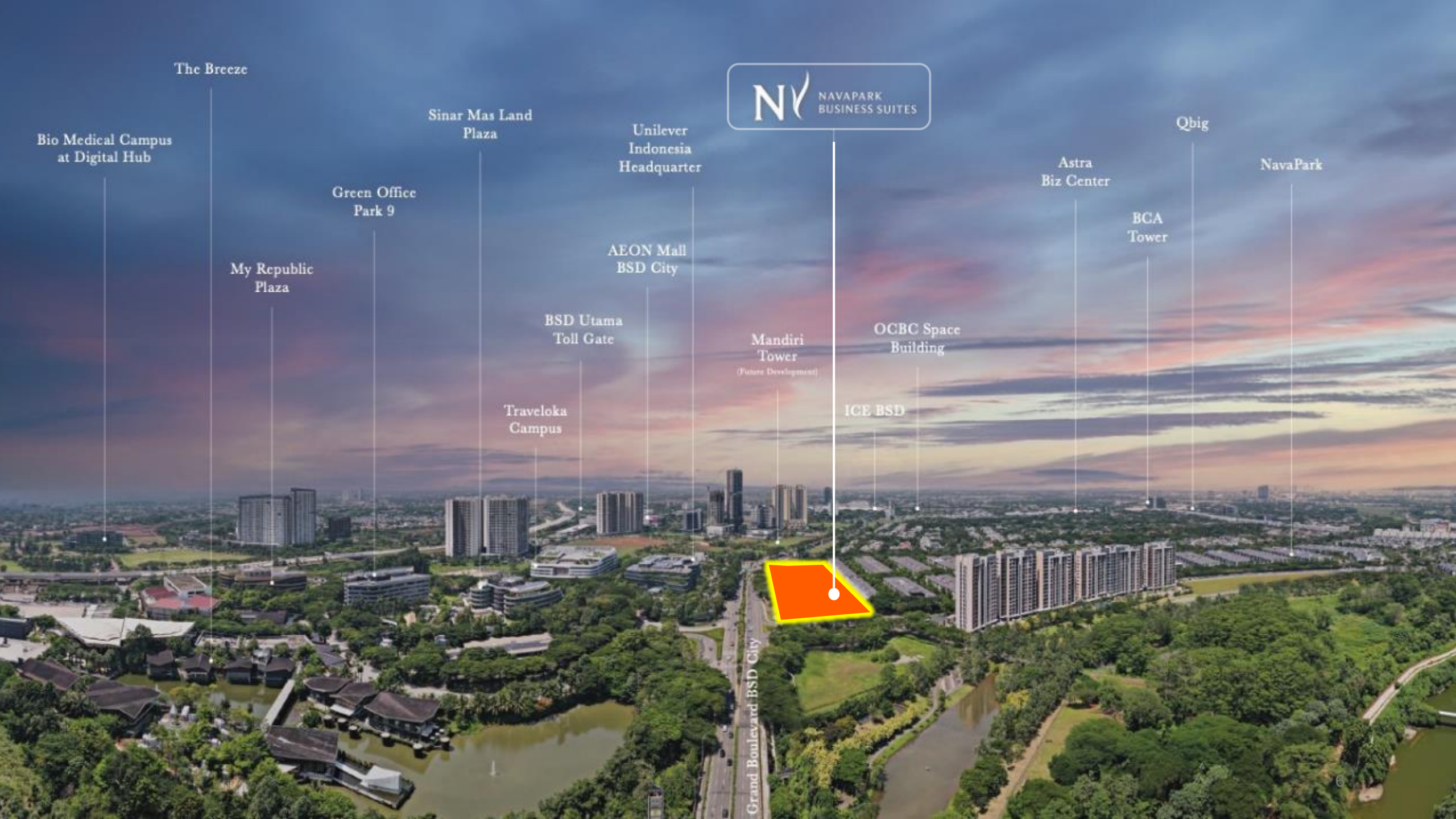
141 ha
Total Area

Types of Establishment

- Office
- Retail
- Apartment/Condotel
- Shophouse



Nestled at the forefront of Navapark’s entrance, the site holds immense potential as the face of Navapark, strategically leave a lasting impression.



NY NAVAPARK BUSINESS SUITES

The Breeze

Bio Medical Campus at Digital Hub

Sinar Mas Land Plaza

Unilever Indonesia Headquarter

Qbig

NavaPark

Green Office Park 9

Astra Biz Center

My Republic Plaza

AEON Mall BSD City

BCA Tower

BSD Utama Toll Gate

Mandiri Tower
(Future Development)

OCBC Space Building

Traveloka Campus

ICE BSD



Grand Boulevard BSD City

NAVAPARK BUSINESS SUITES



Pengembangan Jangka Panjang:

BSD adalah satu-satunya pengembang properti di Serpong yang masih memiliki ribuan hektar lahan untuk dikembangkan, sehingga di masa depan BSD akan memiliki daya tarik terkuat sebagai pusat bisnis, mulai dari populasi penduduk terbesar, pengembangan fasilitas dan infrastruktur baru & menjadi magnet bagi pengunjung lokal dan asing yang akan menyediakan ribuan peluang bisnis.

Kebutuhan Sewa Kantor:

GOP (Green Office Park) - saat ini Tingkat Hunian Sewa Kantor berada di atas 90%

Potensi KEK di BSD City

Central Business District (CBD) di BSD City memiliki pertumbuhan tercepat & telah menjadi Ekosistem Kantor Global. Semakin kuat sejak disetujui sebagai kawasan SEZ (Zona Ekonomi Khusus) yang berfokus pada sektor Teknologi, Pendidikan, dan Medis

Lokasi paling strategis

Persimpangan NV Business Suites telah menjadi titik pertemuan (lalu lintas tinggi) ke segala arah dari/ke Grand Boulevard BSD yang menghubungkan fase 1 ke fase 3 kawasan BSD City

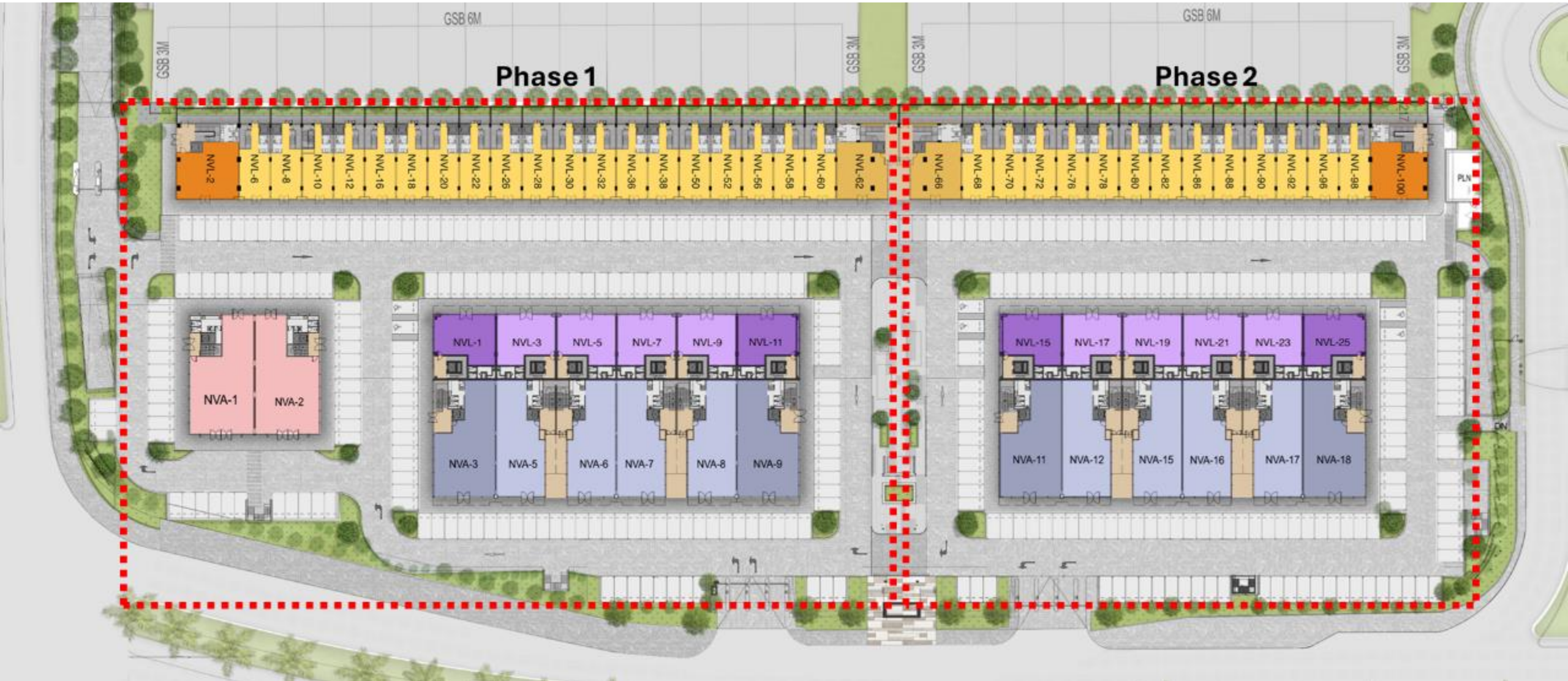
Kekuatan Brand Navapark

Merek Navapark memiliki citra premium yang sangat membantu meningkatkan citra merek bisnis

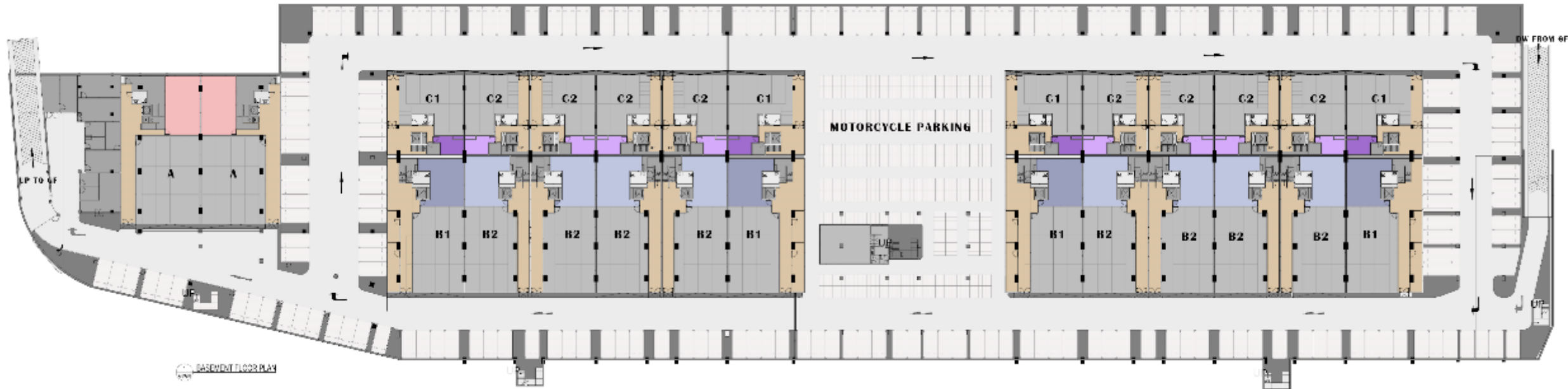


DISCLAIMER: Visual representasi ini dimaksudkan hanya untuk ilustrasi saja dan tidak dapat dianggap data akurat atau mewakili fakta

SITEPLAN



SITEPLAN BASEMENT



TYPE A

Unit menghadap intersection/meeting point dari berbagai akses Grand Boulevard BSD City

Exposure lebar, terlihat dari 2 arah jalan yang berbeda

Tipe A adalah tipe unit terbesar & paling mewah -- hanya ada 2 unit, sangat cocok untuk BRANDING perusahaan

Memiliki 2 fasad dan 3 pintu masuk



DISCLAIMER: This visual representation is intended for illustrative purposes only and cannot be considered accurate data or representative of fact

TYPE A FLOOR PLAN

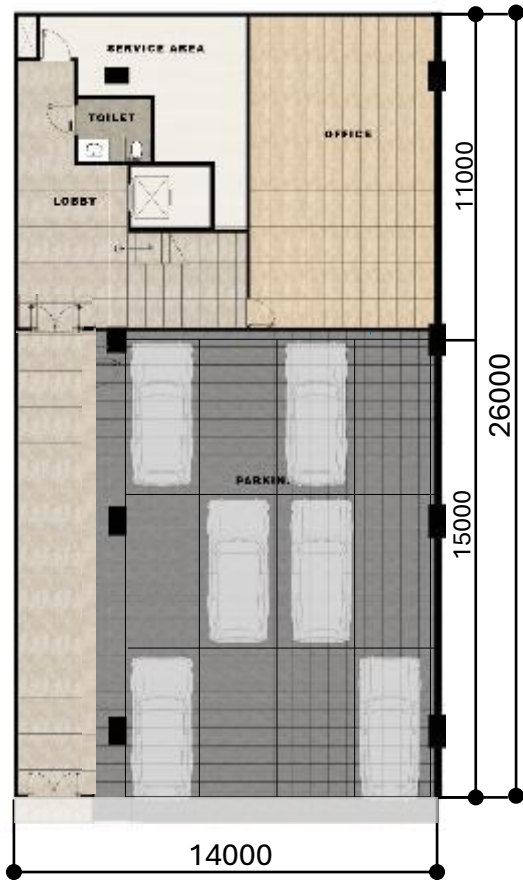
Land : 14 x 26 (364 sq.m)

Building : 2157.54 sqm

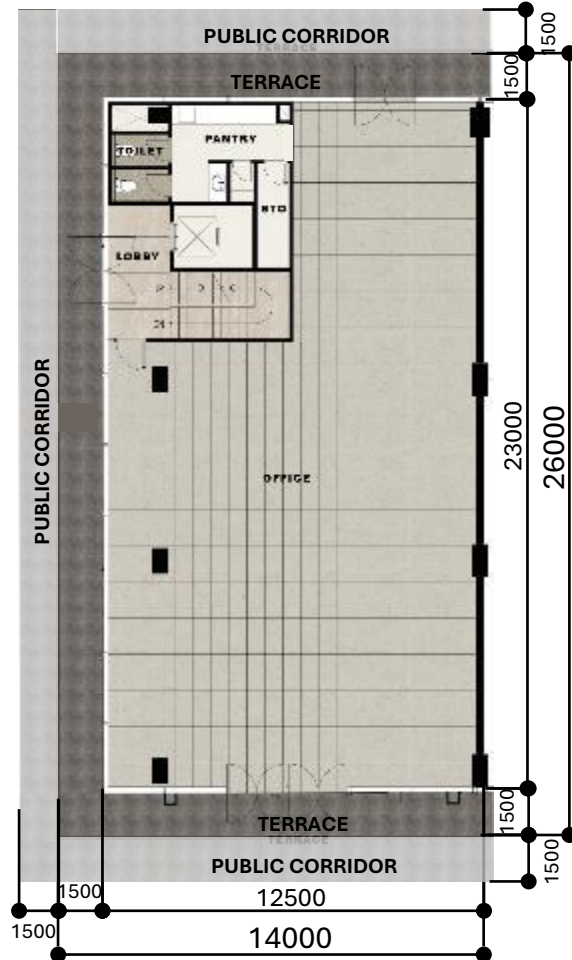
5 Floors + Basement + LIFT



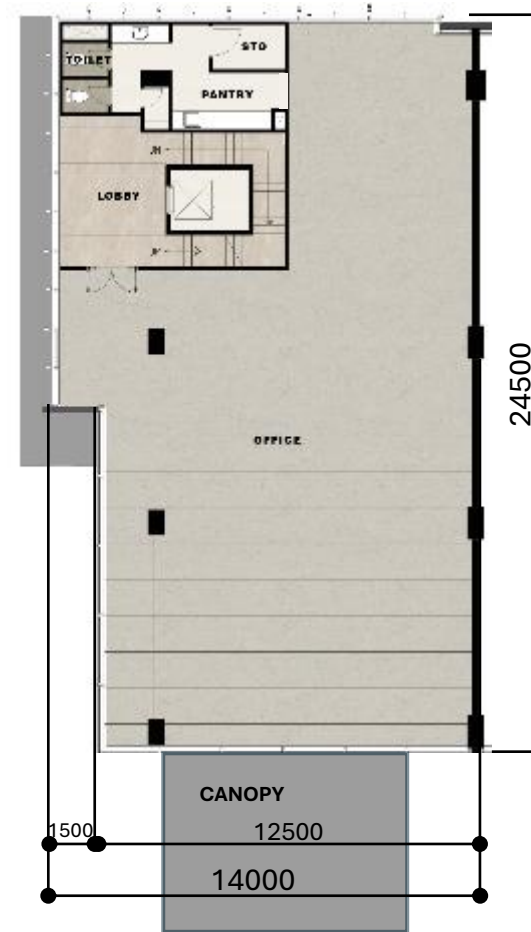
KEYPLAN



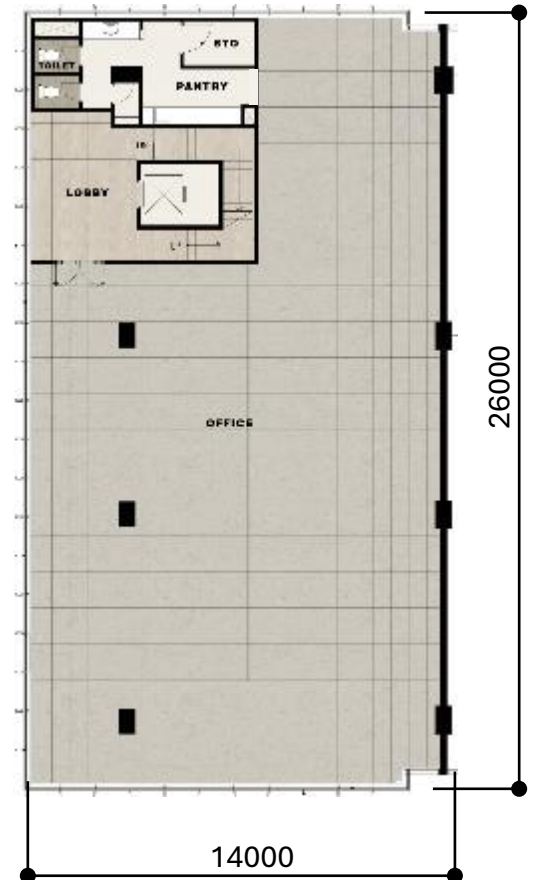
BSM



GF



1F



2F-4F

TYPE A SECTION



Floor to Ceiling Height

KEYPLAN



3000

3000

3000

4000

4000

2800

TYPE A

(Stock, Harga, dan Promo bisa berubah sewaktu-waktu, tanpa pemberitahuan)

NO	BLOK UNIT	TYPE	PL COUNTER	CASH TAHAP	KPR DP 20% -
				24X + 6X	cicil 12X + 5X
				DISC PROMO 5%	DISC PROMO 5%
TYPE A					
1	NVA 1	Type A 5 lt + Basement, Corner	84,095,000,000	79,890,250,000	79,890,250,000
2	NVA 2	Type A 5 lt + Basement, Corner	79,890,000,000	75,895,500,000	75,895,500,000



TYPE B

Semua unit hadap ke Grand Boulevard dengan traffic yg tinggi, menguntungkan untuk branding perusahaan atau produk.

Desain fasad mewah dengan area display yang luas.

Memiliki 2 akses: akses lobi lift yang terpisah dari pintu utama, memungkinkan multi bisnis dalam satu gedung.



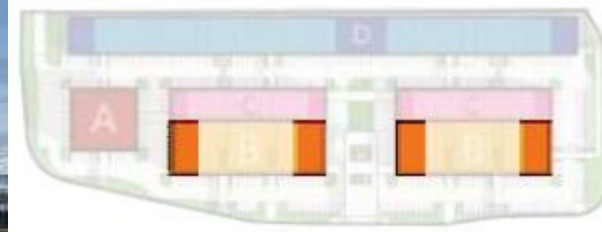
DISCLAIMER: Visual representasi ini dimaksudkan hanya untuk ilustrasi saja dan tidak dapat dianggap data akurat atau mewakili fakta

TYPE B CORNER FLOOR PLAN

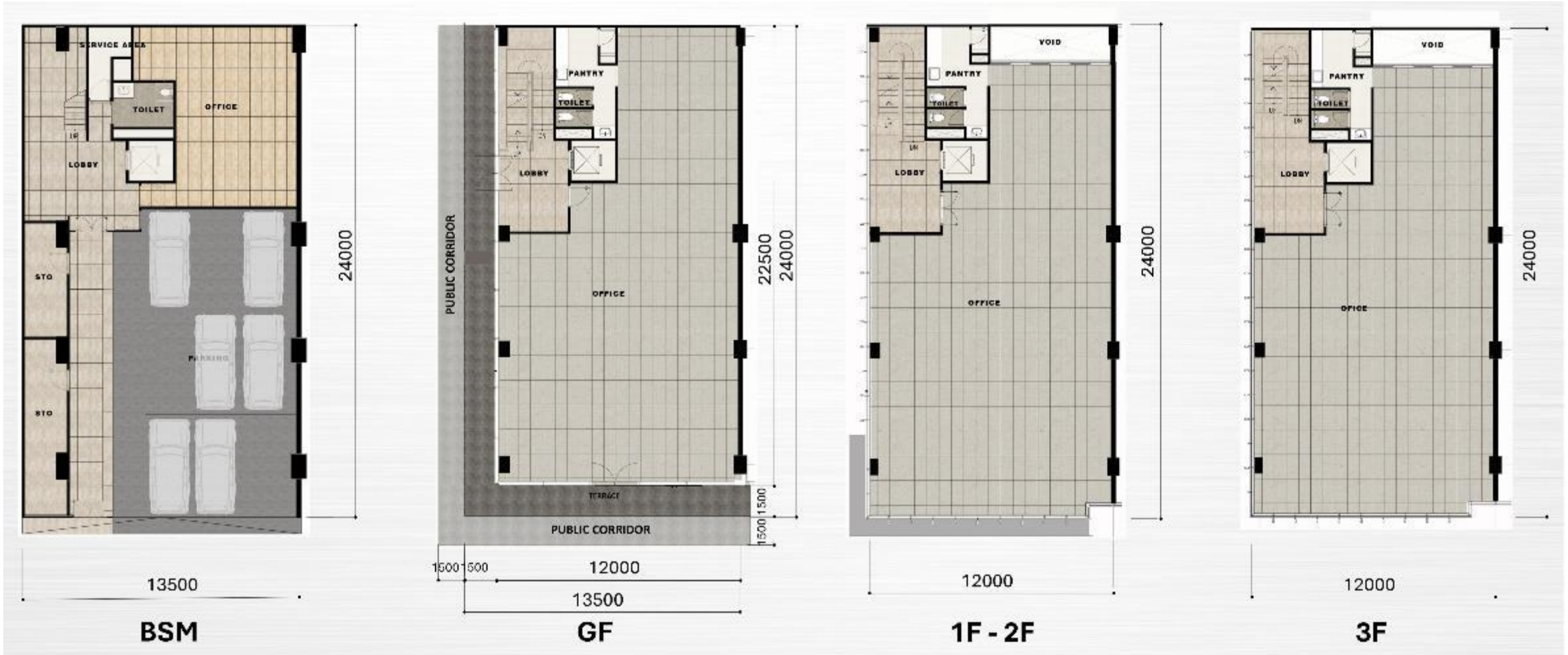
Land : 13.5 x 24 (324 sq.m)

Building : 1,507 sq.m

4 Floors + Basement + LIFT



KEYPLAN



TYPE B STANDARD FLOOR PLAN

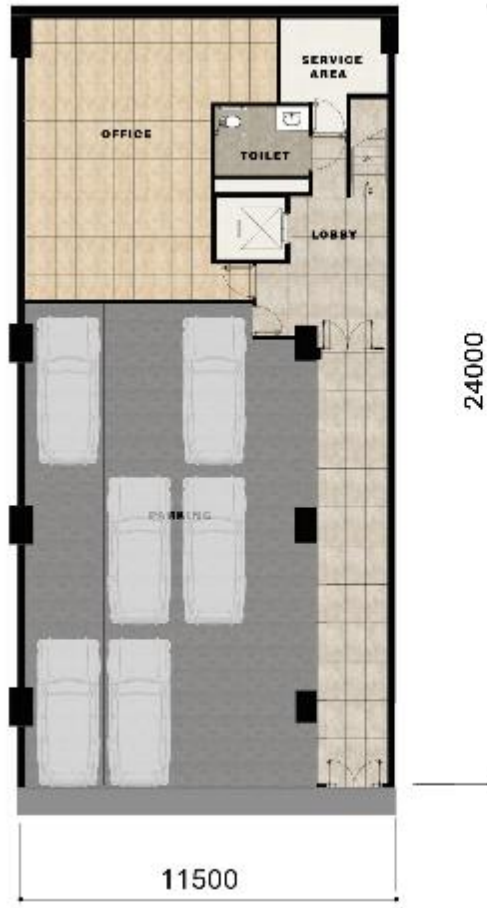
Land : 11.5 x 24 (276 sq.m)

Building : 1,356 sq.m

4 Floors + Basement + LIFT



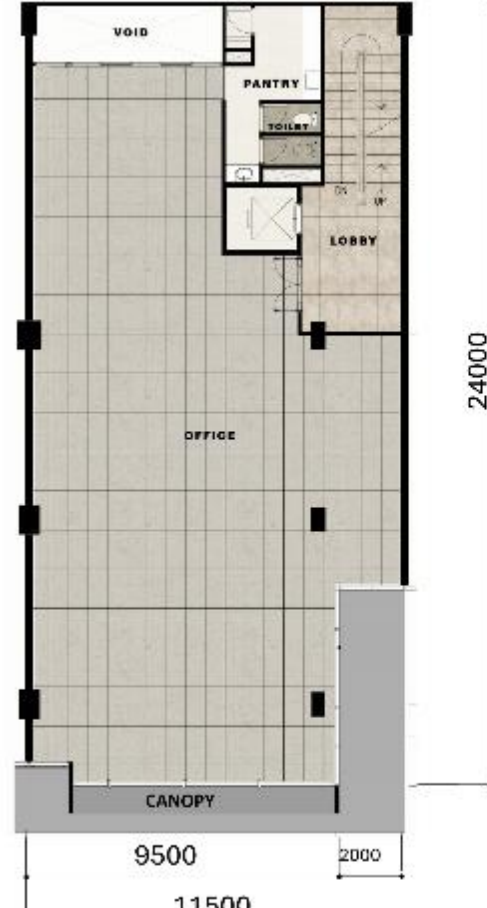
KEYPLAN



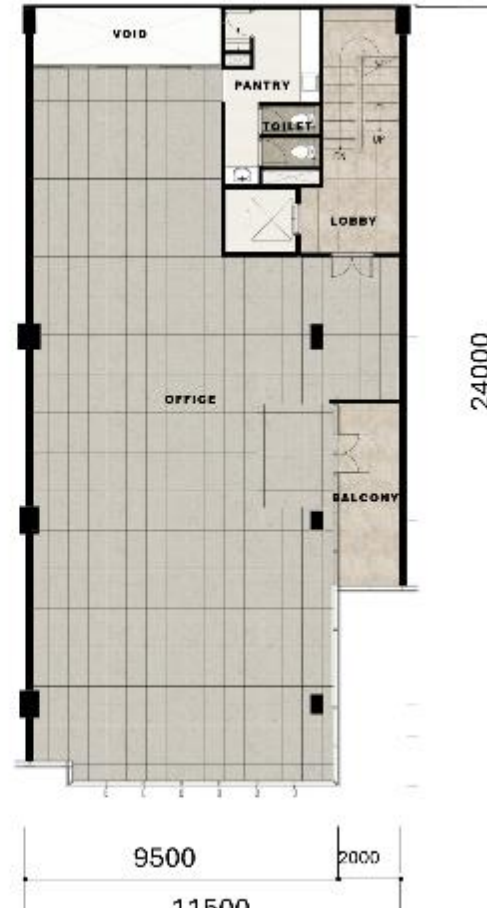
BSM



GF

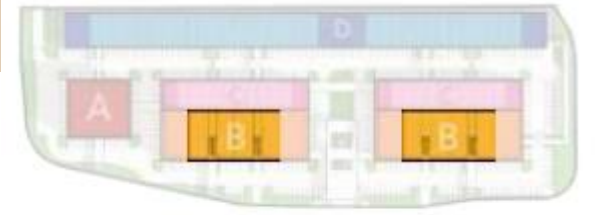


1F-2F



3F

TYPE B SECTION



KEYPLAN

Floor to Ceiling Height



3000

3000

4000

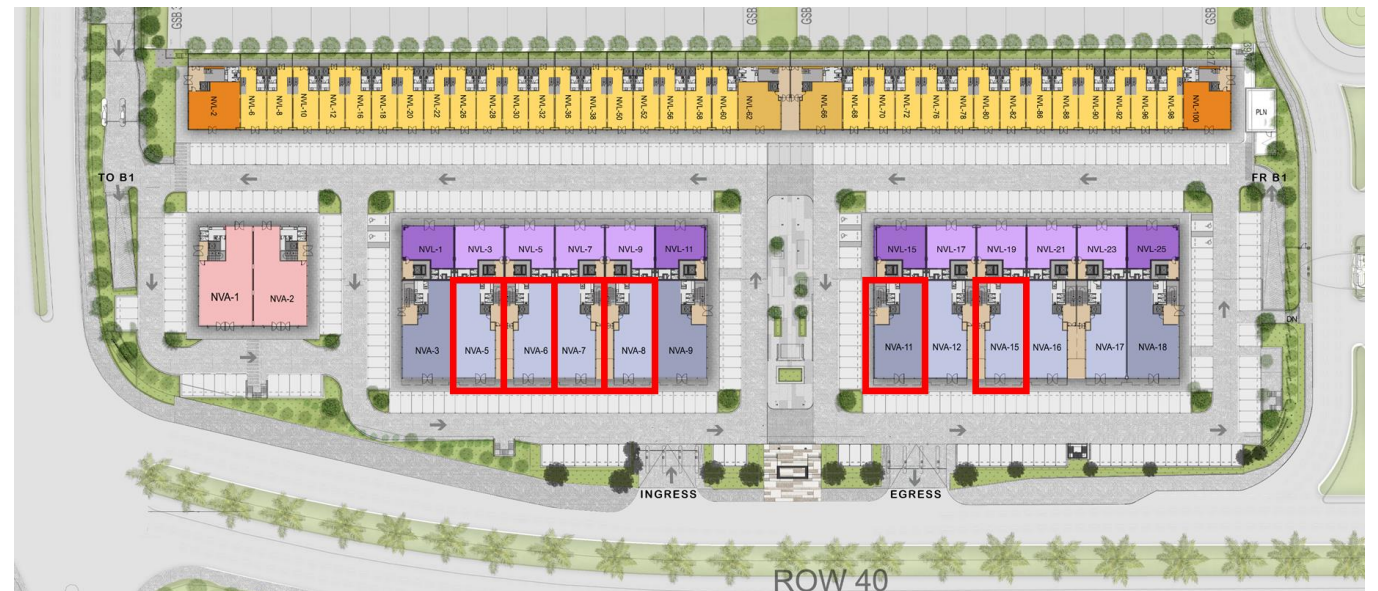
4000

2800

TYPE B Standard & B Corner

(Stock, Harga, dan Promo bisa berubah sewaktu-waktu, tanpa pemberitahuan)

NO	BLOK UNIT	TYPE	PL COUNTER	CASH TAHAP 24X + 6X	KPR DP 20% - cicil 12X + 5X
				DISC PROMO 5%	DISC PROMO 5%
TYPE B					
1	NVA 5, 6, 7, 15	Type B 4 lt + Basement	48,122,000,000	45,715,900,000	45,715,900,000
2	NVA 8	Type B 4 lt + Basement	48,361,000,000	45,942,950,000	45,942,950,000
3	NVA 11	Type B 4 lt + Basement, Corner	57,722,000,000	54,835,900,000	54,835,900,000



TYPE C

Fasad mewah karena lebar unit yg besar dan menguntungkan untuk tampilan produk

Memiliki “Private Parking di dalam Unit” di Basement

Memiliki dimensi ruang yang efisien dan luas

Berpotensi untuk dikombinasikan dengan Tipe B untuk memperluas ruang Bisnis yang lebih nyaman



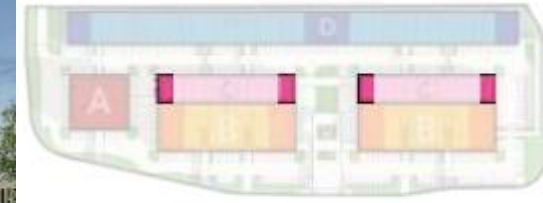
DISCLAIMER: Visual representasi ini dimaksudkan hanya untuk ilustrasi saja dan tidak dapat dianggap data akurat atau mewakili fakta

TYPE C CORNER FLOOR PLAN

Land : 13.5 x 14 (189 sq.m)

Building : 897 sq.m

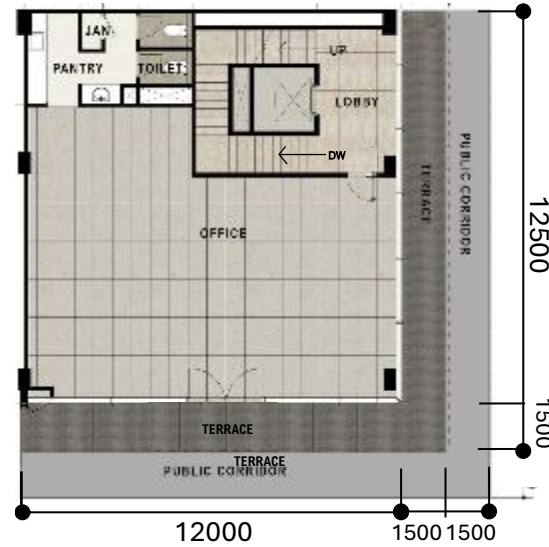
4 Floors + Basement + LIFT



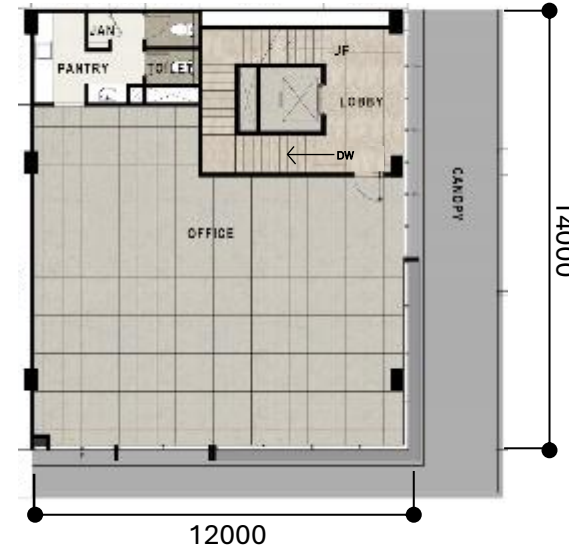
KEYPLAN



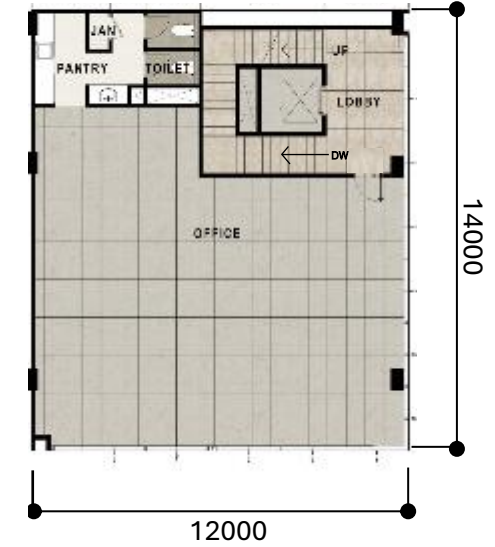
BASEMENT



GF



1F



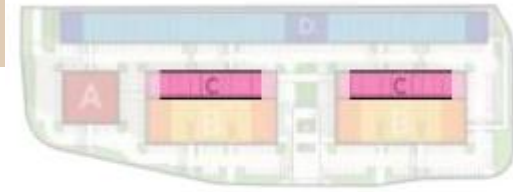
TYPICAL 2F-3F

TYPE C STANDARD FLOOR PLAN

Land : 11.5 x 14 (161 sq.m)

Building : 823 sq.m

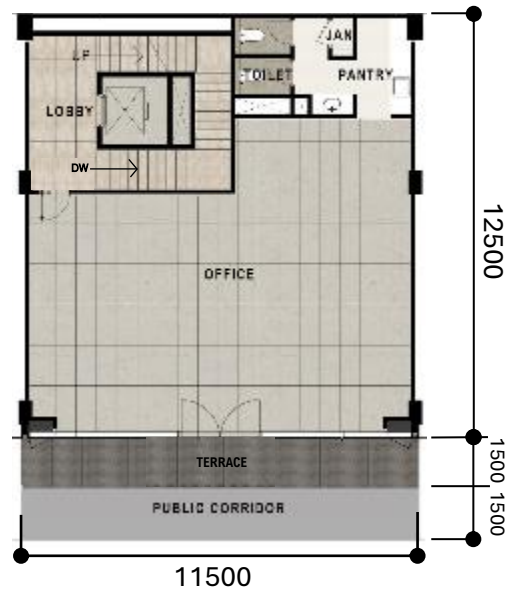
4 Floors + Basement + LIFT



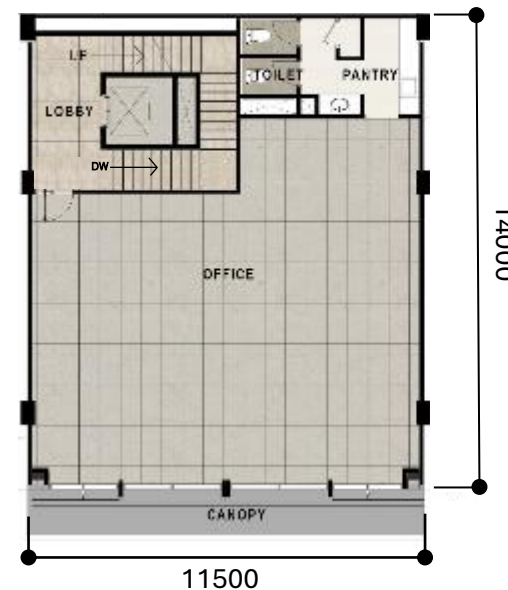
KEYPLAN



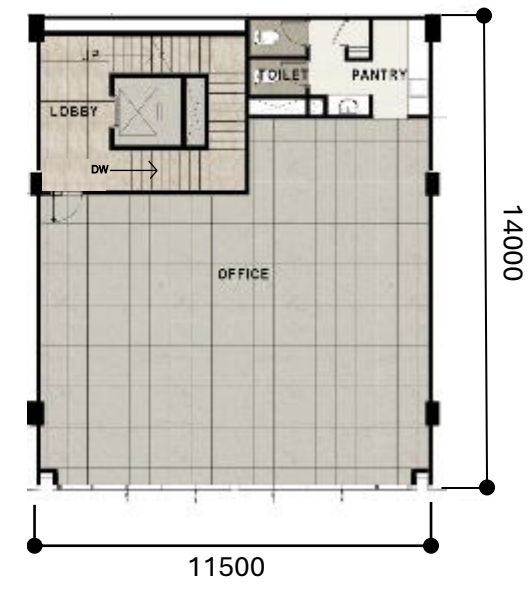
BASEMENT



GF

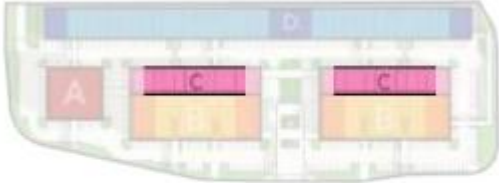


1F



TYPICAL 2F-3F

TYPE C SECTION



KEYPLAN

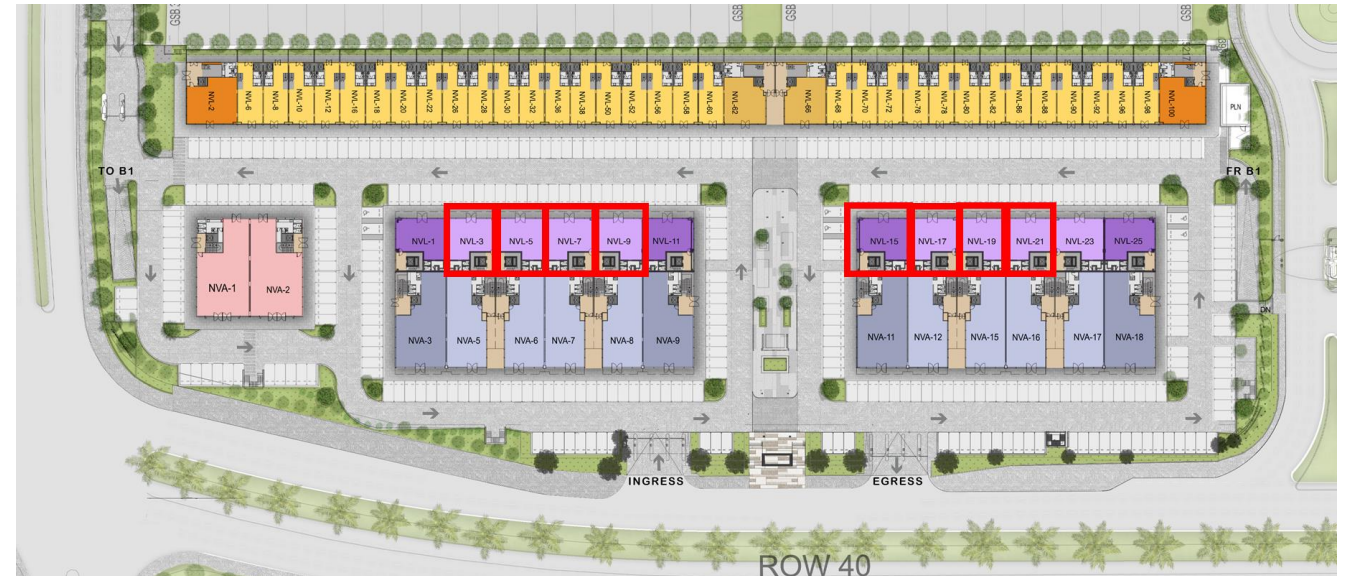


Floor to Ceiling Height

TYPE C Standard & C Corner

(Stock, Harga, dan Promo bisa berubah sewaktu-waktu, tanpa pemberitahuan)

NO	BLOK UNIT	TYPE	PL COUNTER	CASH TAHAP 24X + 6X	KPR DP 20% - cicil 12X + 5X
				DISC PROMO 5%	DISC PROMO 5%
TYPE C					
1	NVL 3, 5, 7, 9, 17, 19, 21	Type C 4 lt + Basement	21,855,000,000	20,762,250,000	20,762,250,000
2	NVL 15	Type C 4 lt + Basement, Corner	27,528,000,000	26,151,600,000	26,151,600,000



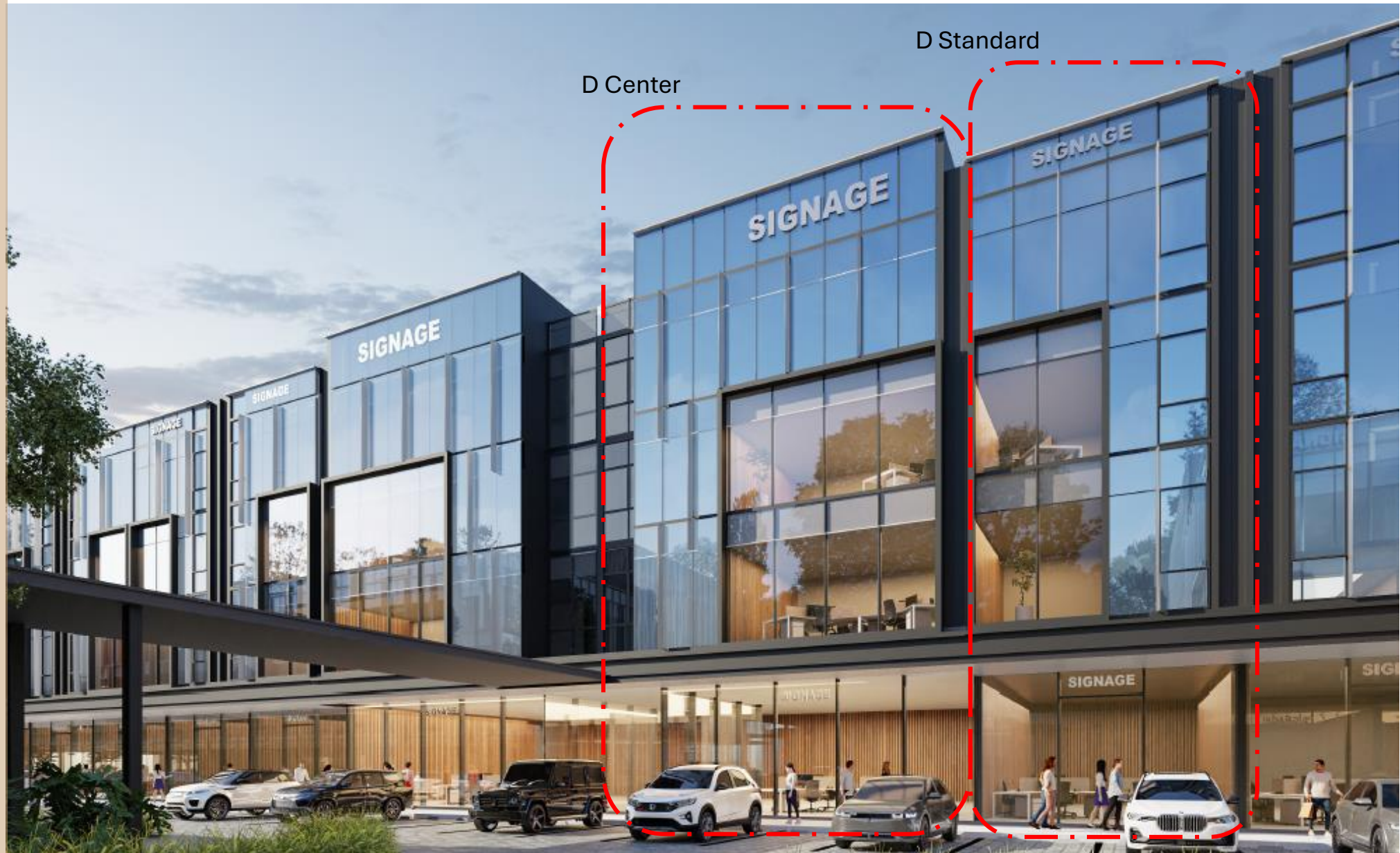
TYPE D

Pengaturan akses internal yang efisien, semua unit dapat dilewati oleh traffic kendaraan

Dekat dengan Central Garden & Grand Drop-off yg kanopi-nya lebar, menciptakan area luar ruangan bersama yang terintegrasi dengan semua unit di area tersebut

Khusus untuk unit Tipe D Corner dan Tipe D Center, memiliki 2 akses: Pintu Utama & Lift Lobi, serta hadap ke Grand Boulevard

Efisiensi ruang yang optimal



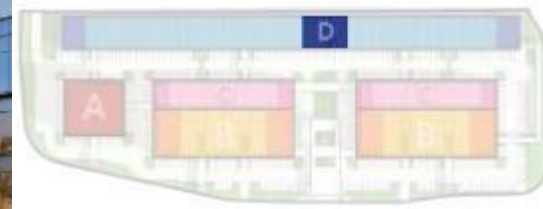
DISCLAIMER: This visual representation is intended for illustrative purposes only and cannot be considered accurate data or representative of fact

TYPE D CENTER FLOOR PLAN

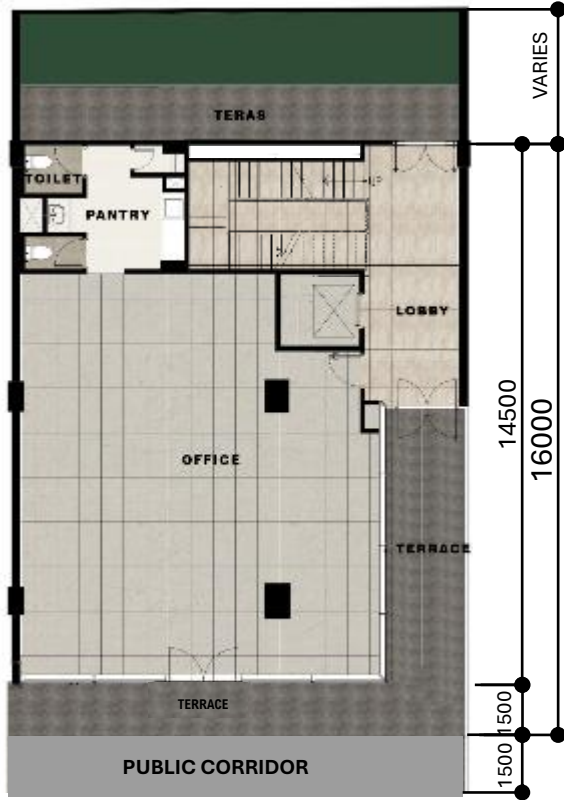
Land : 12 x 18 (235 sq.m)

Building : 779 sq.m

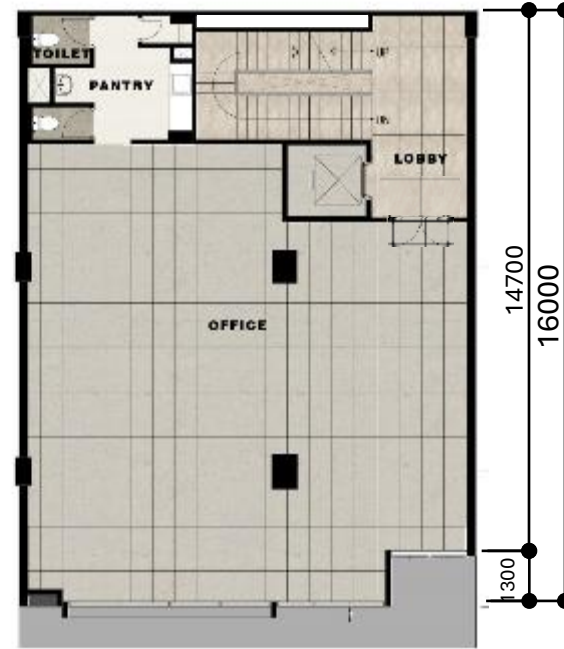
4 Floors + LIFT



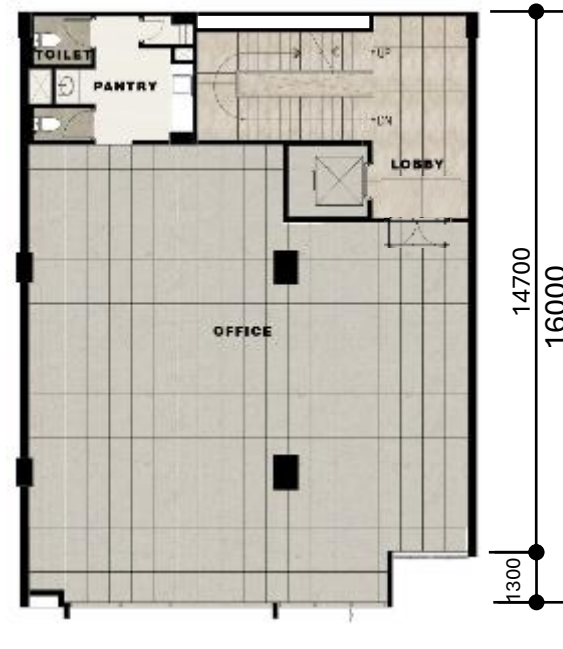
KEYPLAN



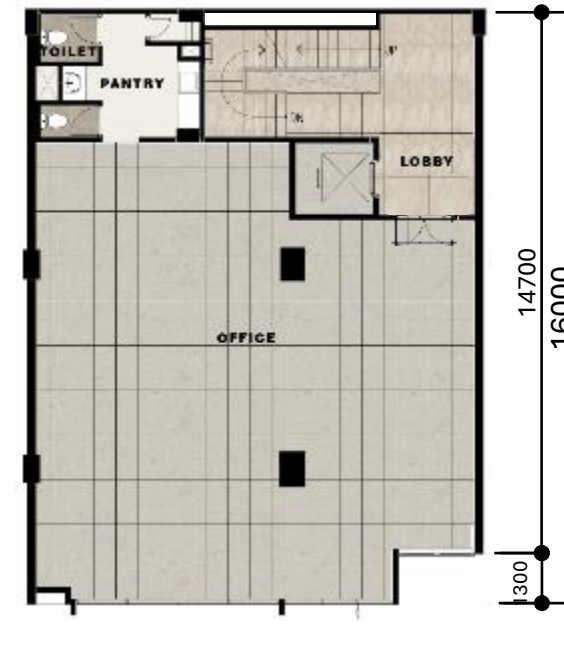
GF



1F

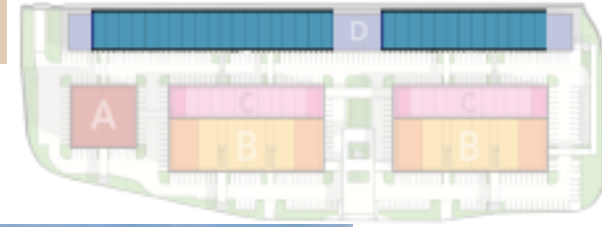


2F



3F

TYPE D SECTION



KEYPLAN

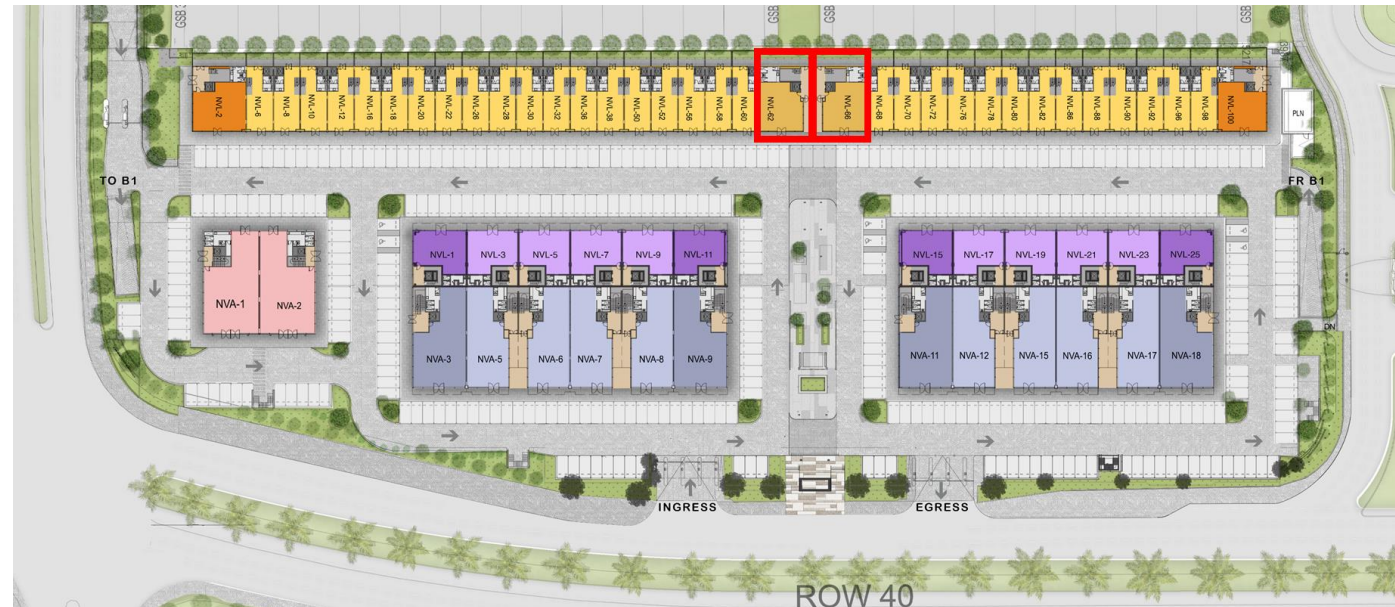
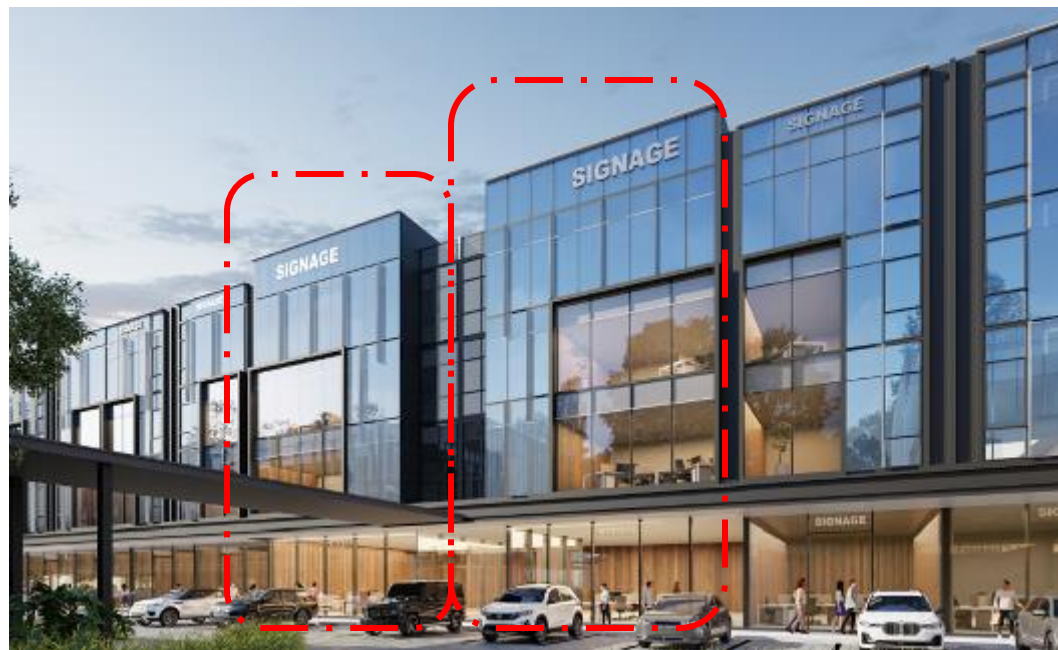
Floor to Ceiling Height



TYPE D Center

(Stock, Harga, dan Promo bisa berubah sewaktu-waktu, tanpa pemberitahuan)

NO	BLOK UNIT	TYPE	PL COUNTER	CASH TAHAP 24X + 6X	KPR DP 20% - cicil 12X + 5X
				DISC PROMO 5%	DISC PROMO 5%
TYPE D					
1	NVL 62	Type D 4 lt, Center	27,356,000,000	25,988,200,000	25,988,200,000
2	NVL 66	Type D 4 lt, Center	27,389,000,000	26,019,550,000	26,019,550,000



TYPE D STANDARD FLOOR PLAN

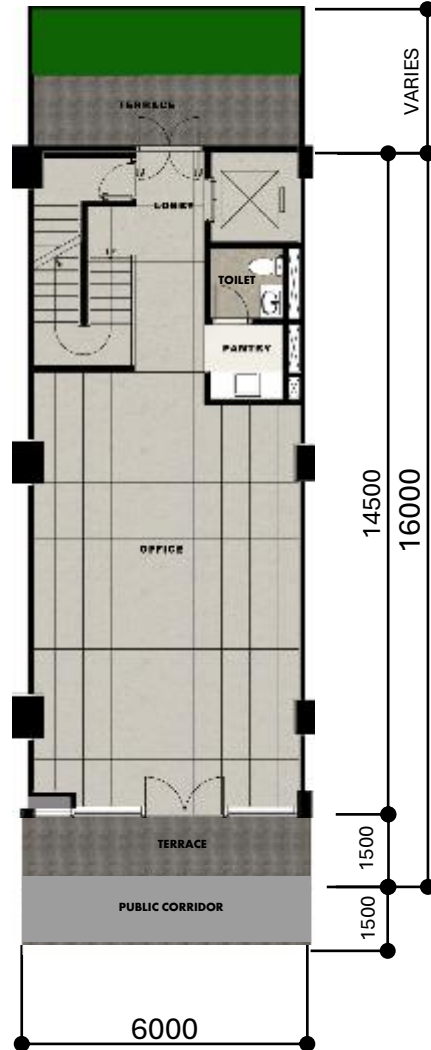
Land : 6 x 18 (114 sq.m – 120 sq.m)

Building : 412 sq.m

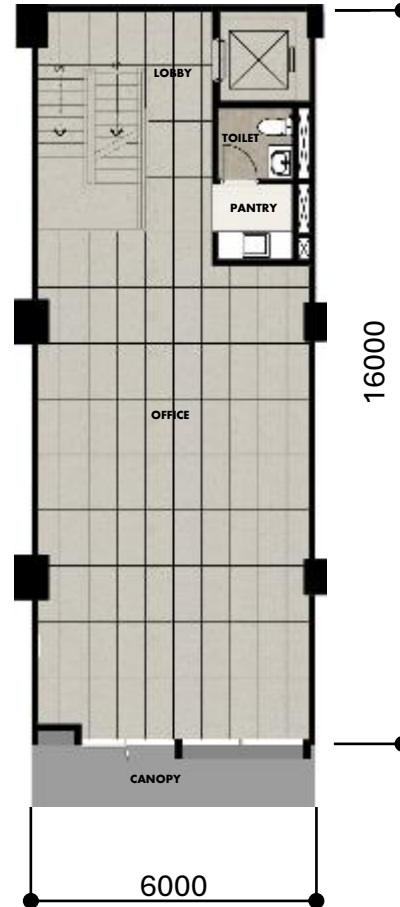
4 Floors + LIFT



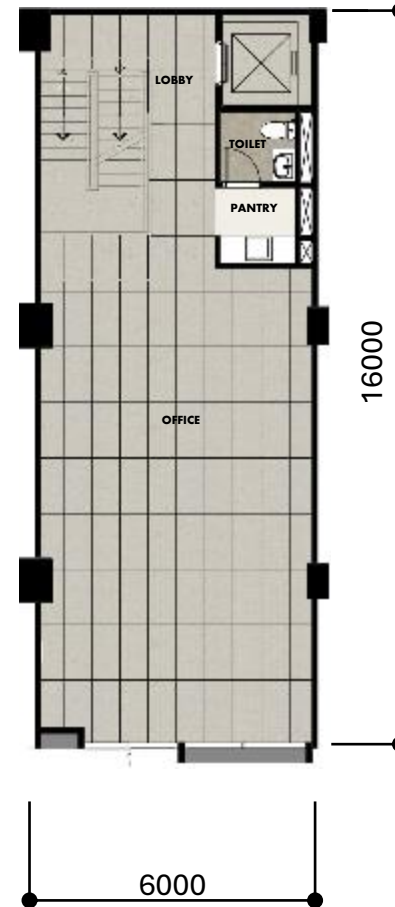
KEYPLAN



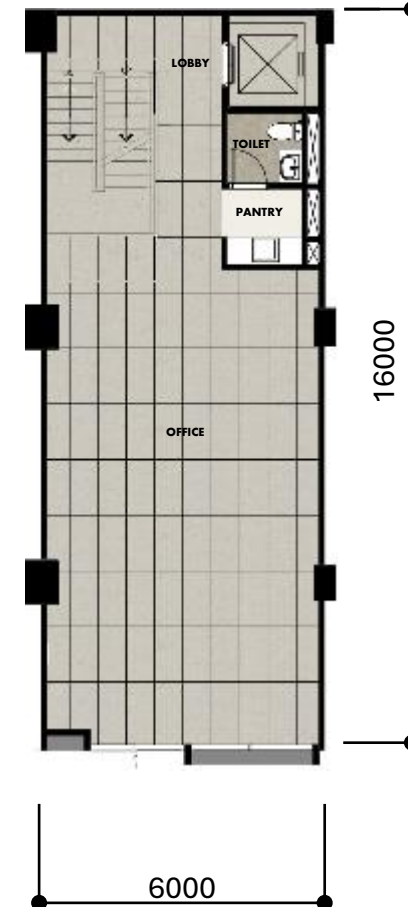
GF



1F



2F



3F

TYPE D SECTION



KEYPLAN

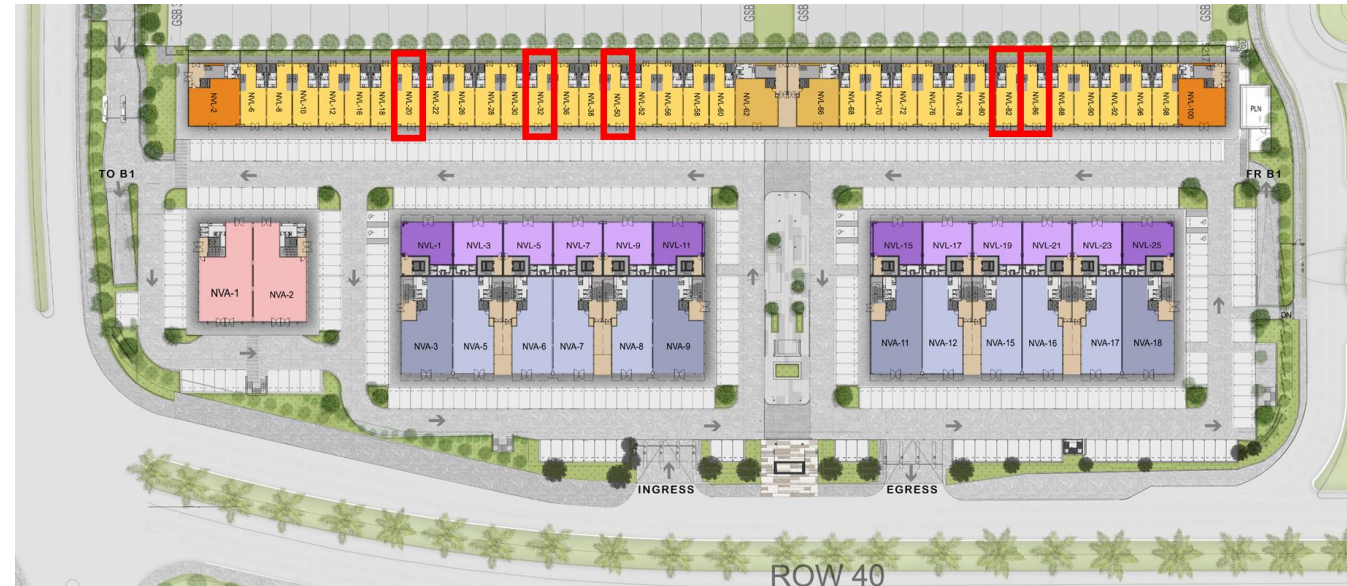
Floor to Ceiling Height



TYPE D Standard

(Stock, Harga, dan Promo bisa berubah sewaktu-waktu, tanpa pemberitahuan)

NO	BLOK UNIT		TYPE	PL COUNTER	CASH TAHAP 24X + 6X	KPR DP 20% - cicil 12X + 5X
					DISC PROMO 5%	DISC PROMO 5%
TYPE D						
1	NVL	20	Type D 4 lt	10,330,000,000	9,813,500,000	9,813,500,000
2	NVL	32	Type D 4 lt	10,340,000,000	9,823,000,000	9,823,000,000
3	NVL	50	Type D 4 lt	10,350,000,000	9,832,500,000	9,832,500,000
4	NVL	82, 86	Type D 4 lt	10,390,000,000	9,870,500,000	9,870,500,000



MARKETING GALLERY NAVAPARK

Jl. Grand Boulevard BSD City
Tangerang Selatan
Indonesia

DEVELOPED BY



THANK YOU

DISCLAIMER

Neither the Developer nor its agents will be held responsible for any inaccuracies or omissions in the information contained in this brochure. The Developer does not accept responsibility for any errors or omissions or for any losses suffered by any person or legal entity resulting from the use of the information contained in this brochure, howsoever caused. The statements, visual representations, models, show units, displays and illustrations, photographs, art renderings and other graphic representations and references are intended to portray only artist impressions of the development and décor and cannot be regarded as accurate or representations of fact. All areas and other measurements are approximate measurements and are subject to change and final survey. All plans and models are not to scale unless expressly stated and are subject to amendment. All information, specifications, renderings, visual representations, measurements and plans are subject to change as may be required by us and/or the relevant authorities. The Sale and Purchase Agreement (SPA, also known as PPJB) shall form the entire agreement between the Developer and the Purchaser and shall supersede all statements, representations or promises made prior to the signing of the SPA and shall in no way be modified by any statements, representations or promises made by us or our agents which are not embodied in the SPA, whether before or after the signing of the SPA. Any explanation concerning the SPA and the development is for information purposes only and it is recommended that potential Purchasers seek independent legal advice with regard to the proposed purchase. Marble and granite are natural stone materials containing veins with tonality differences. There will be colour and markings caused by their complex mineral composition and incorporated impurities. While such materials can be pre-selected before installation, this non-conformity in the marble or granite cannot be totally avoided. Granite tiles are pre-polished before laying and care has been taken for their installation. Hence some differences may be felt at the joints. The tonality pattern of marble or granite selected and installed shall be subject to availability. Timber is natural material containing veins and tonal differences. Thus it is not possible to achieve total consistency of colour and grain in its selection and installation. Layout/location of kitchen cabinets, fan coil units and electrical points are subject to Developer's sole discretion and final design.